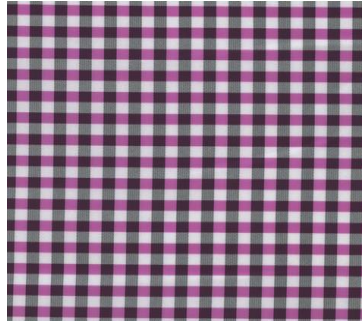


2 0 1 9

Warm Tip:Color difference existing when scanned,please refer to the real object.



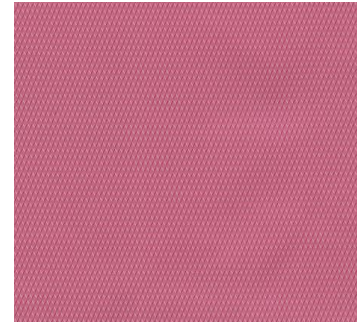
 FLLPV106-6



 FLL148




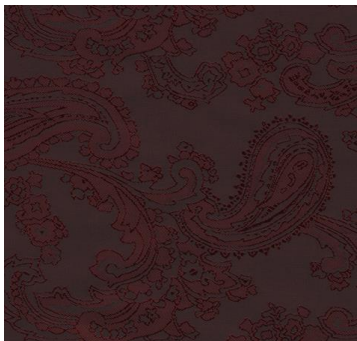
 FLLF502-213




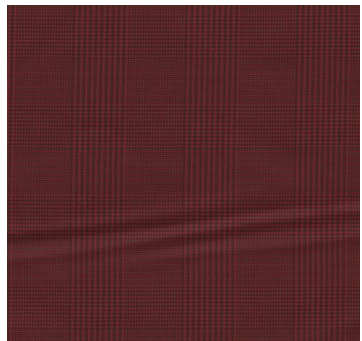
 FLL624-129




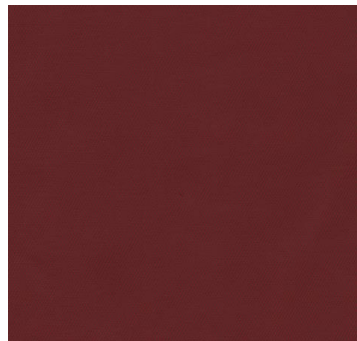
 267.FLLDL080




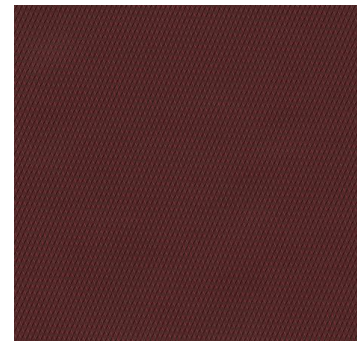
 111.FLL624-022




 24.FLL179



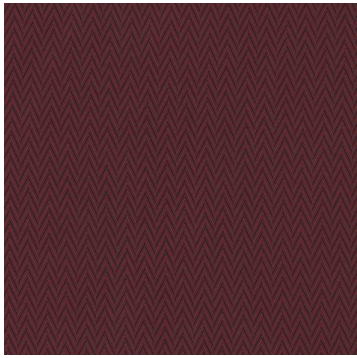
 54.FLL621-4035



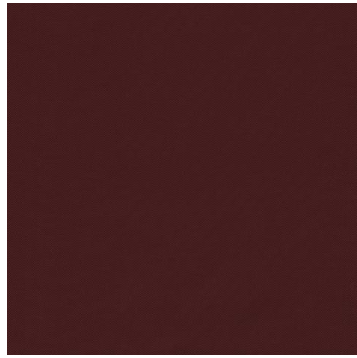
 63.FLL624-132



 268.FLLDL081



 71.FLL624-027




 43.FLLYK1780-139



 269.FLLJQ01




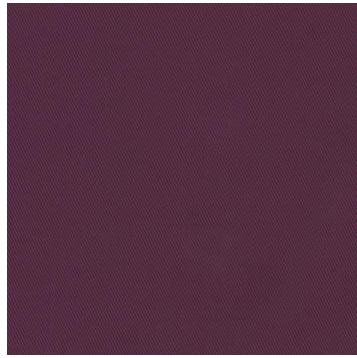
 33.FLL623-HS




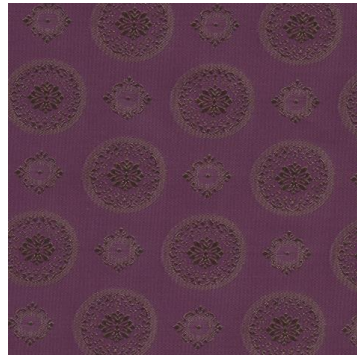
 259.FLLDL075




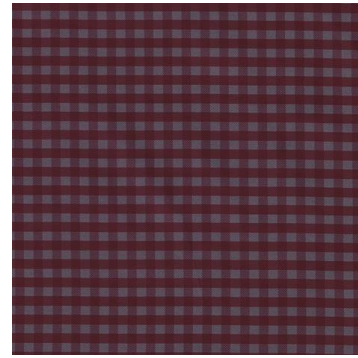
 270.FLLDL085



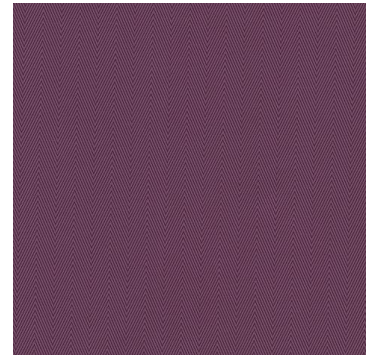
 55.FLL623-24



 122.FLL624-118




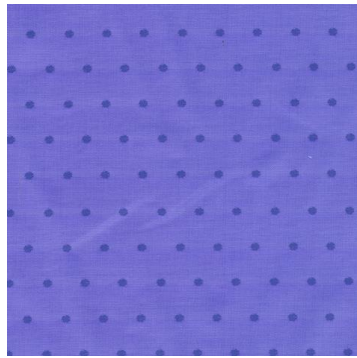
 11.FLL185




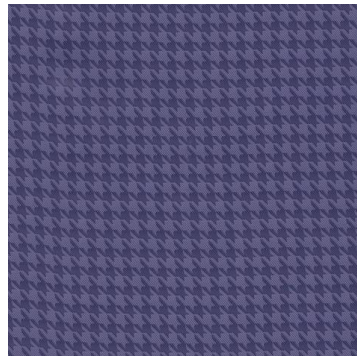
 67.FLL624-133




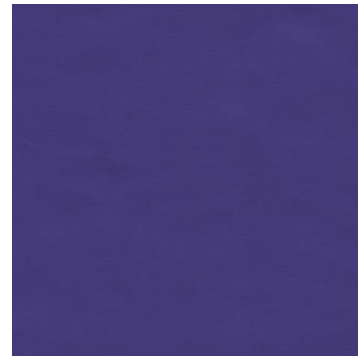
 201.FLLDL037



 125.FLL86742-1




 83.FLL624-122



 31.FLL8808N-35



 78.FLL624-120




 271.FLLBB001



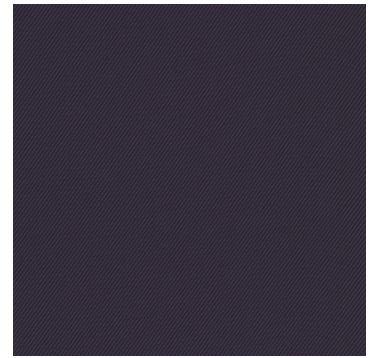
 248.FLLYK1650-210



 190.FLLDL015




 30.FLLF502-237




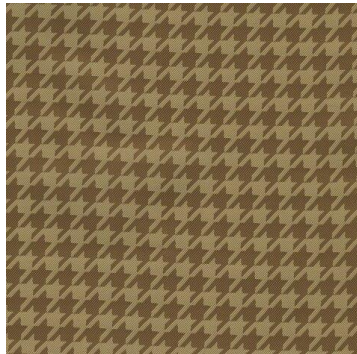
 151.FLLYK1790-42




 106.FLL624-024




 50.FLL2006-70




 81.FLL624-123




 101.FLL624-048



 232.FLLDL029




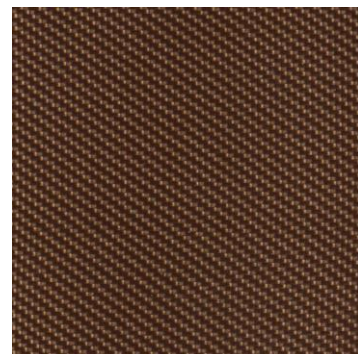
 272.FLLDL086




 34.FLLF502-210




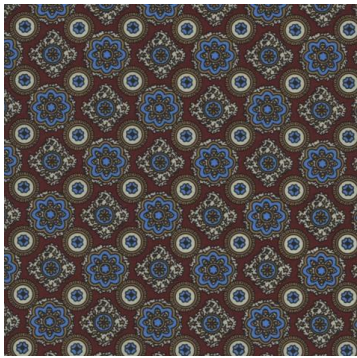
 133.FLLYK580-16



 247.FLLYK1650-143



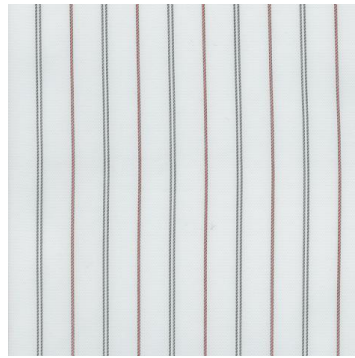
 219.FLLDL047



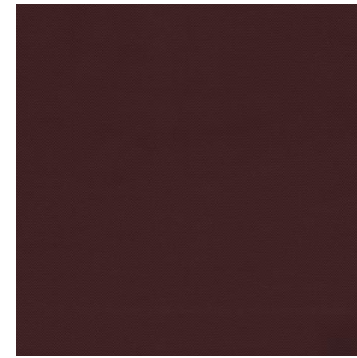
187.FLLDL002



144.FLLYK1780-149



129.FLLVPX116



32.FLL622-430



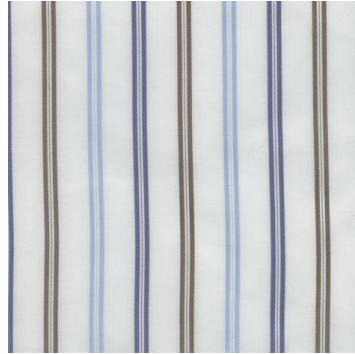
273.FLLDL087



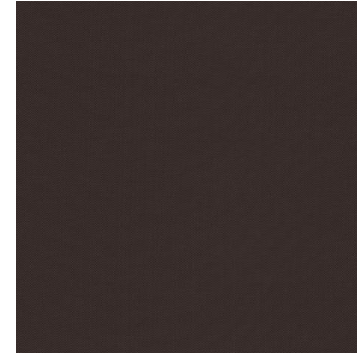
181.FLL9727-11



51.FLL623-26



131.FLL624-106



45.FLLYK1780-187



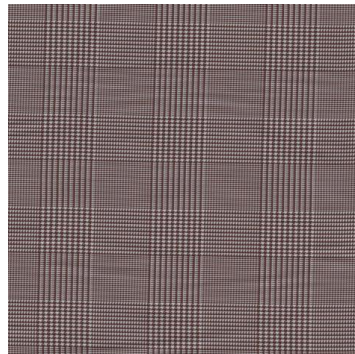
192.FLLDL017



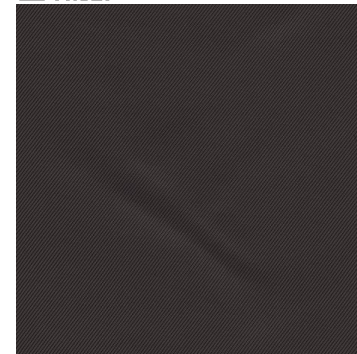
274.FLLJQ228-133



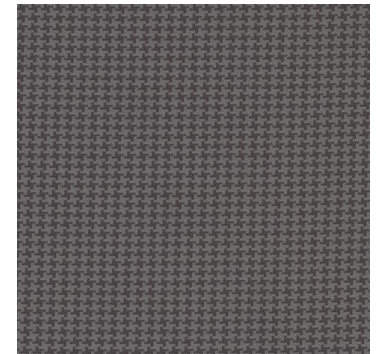
253.FLLYK1650-81



23.FLL178



53.FLL2006-35



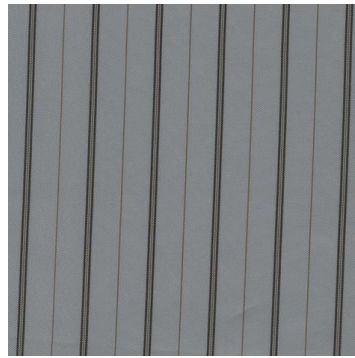
19.FLL3002-1



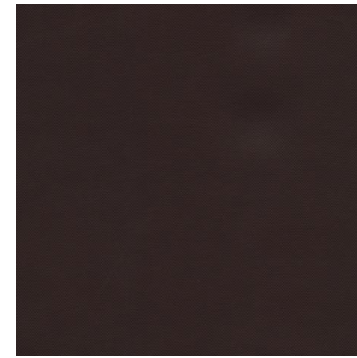
108.FLLPV106-3



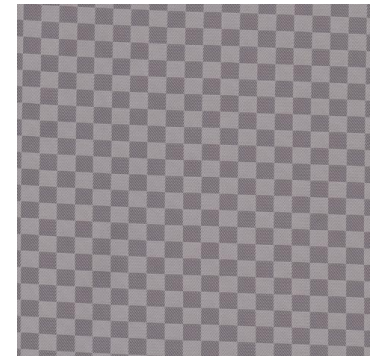
39.FLL8808N-509



134.FLLYK580-28



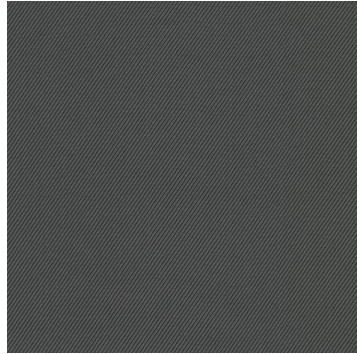
40.FLL621-4927



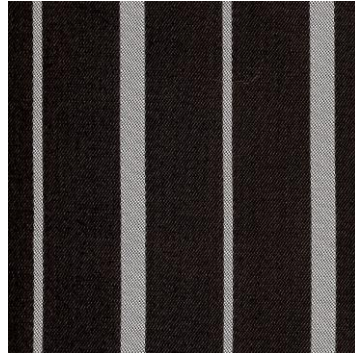
75.FLL624-040



197.FLLDL038



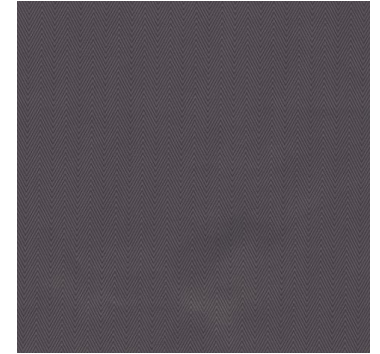
154.FLLYK1790-490



275.FLL624-003



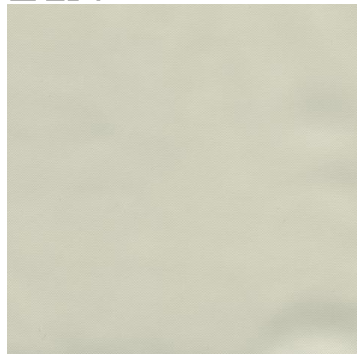
36.FLL622-083



68.FLL624-056



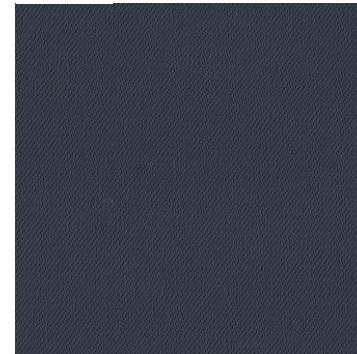
257.FLLDL072



26.FLL621-003



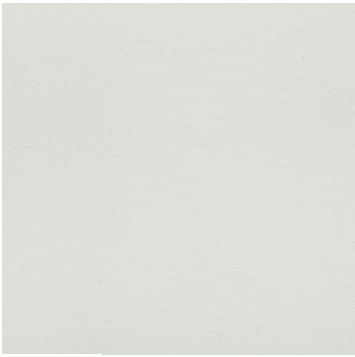
114.FLLPV8161-63



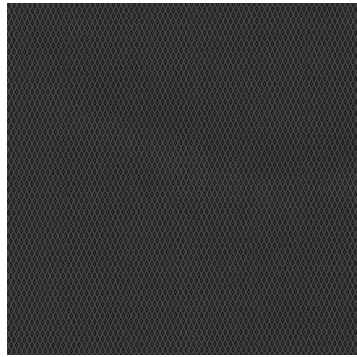
241.FLL217



276.FLLDL088



139.FLLYK1780-101



64.FLL0388-810



84.FLL3223-512



277.FLLDL089



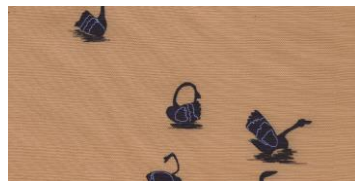
261.FLLDL077



237.FLLDL062



239.FLLDL060



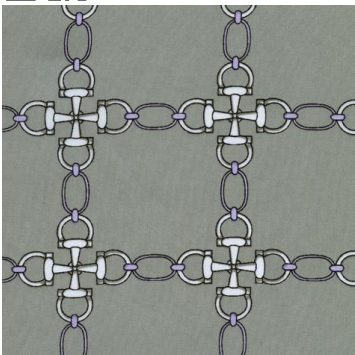
238.FLLDL061



234.FLLDLO39



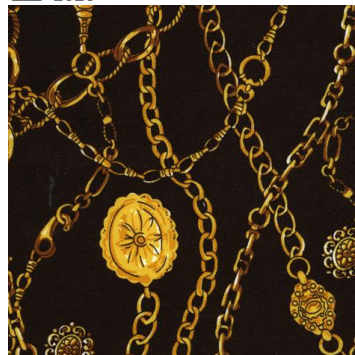
278.FLLDL090



227.FLLDL055



226.FLLDL054



228.FLLDL056



225.FLLDL053



240.FLLDL059



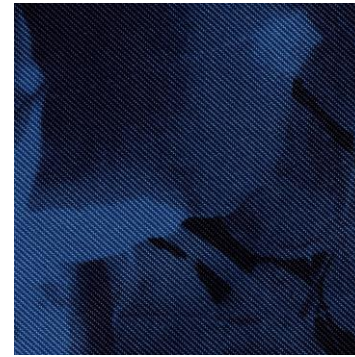
279.FLLDL091



280.FLLDL092



263.FLLDL068



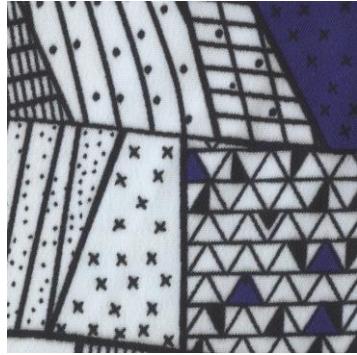
264.FLLDL069



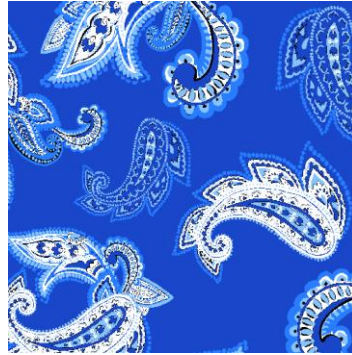
265.FLLDL070



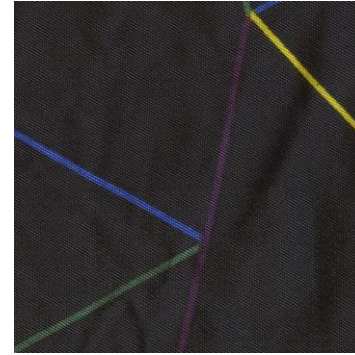
281.FLLDL093



258.FLLDL073



266.FLLDL079



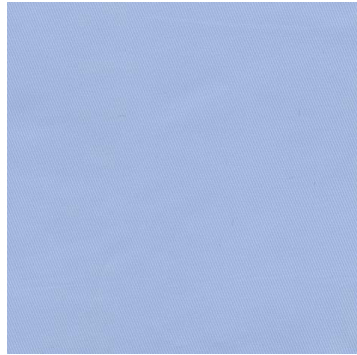
260.FLLDL076



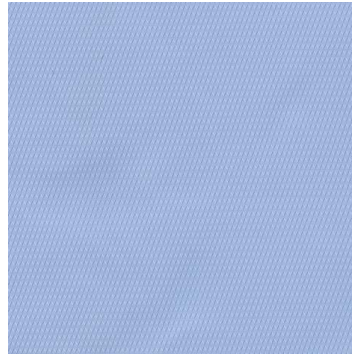
282.FLLDL095



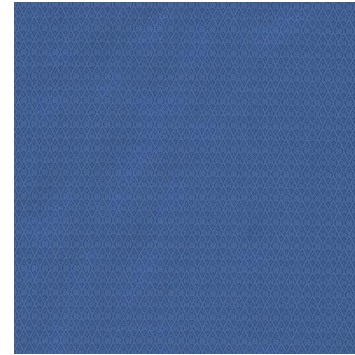
188.FLLDL008



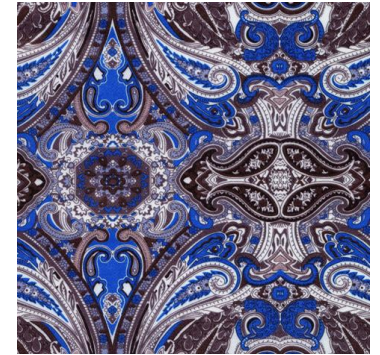
49.FLLF503-62



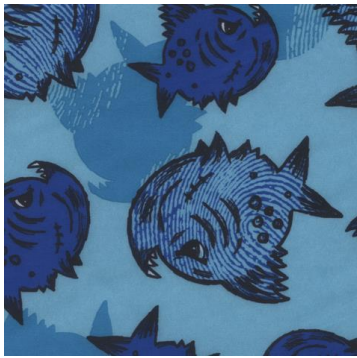
61.FLL624-130



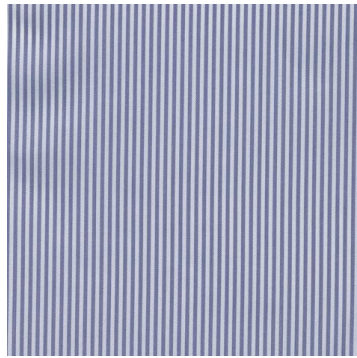
77.FLL624-126



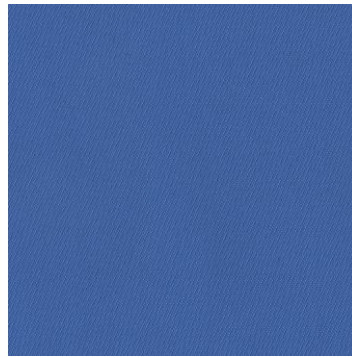
216.FLLDL044



189.FLLDL009



1.FLL181



251.FLLYK1650-826



27.FLL621-302



283.FLLDL096



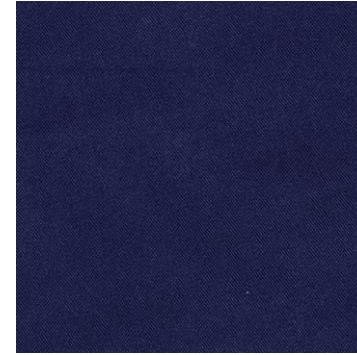
284.FLLBB002



152.FLLYK1790-39



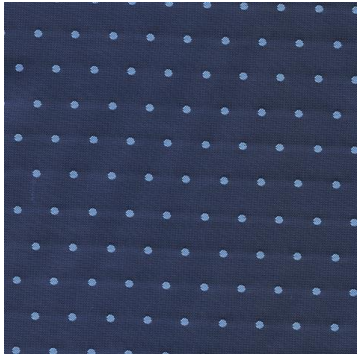
191.FLLDL033



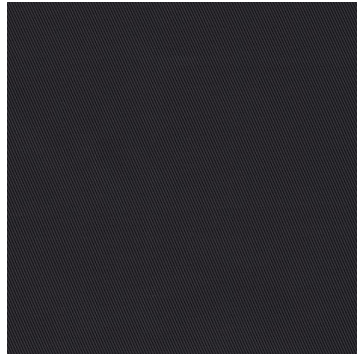
285.FLL223



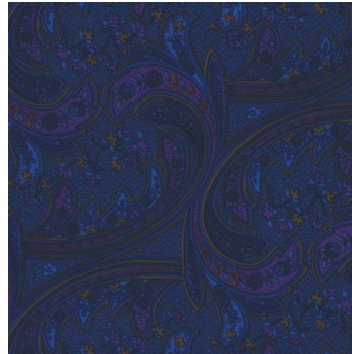
286.FLL225



126.FLL86742-2



57.FLL623-27



193.FLLDL031



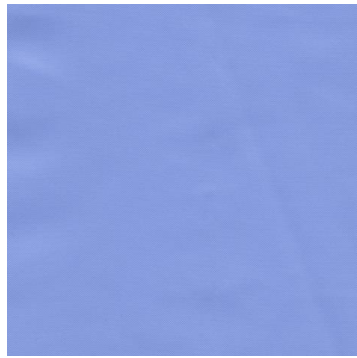
242.FLL218



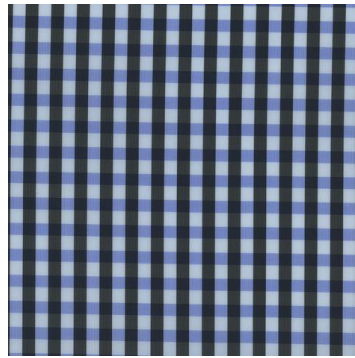
200.FLLDL013



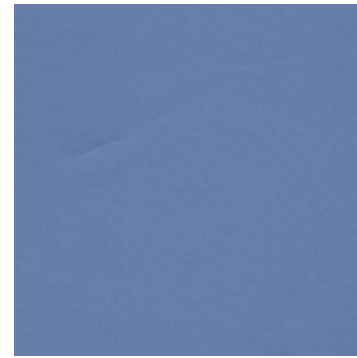
113.FLL624-010



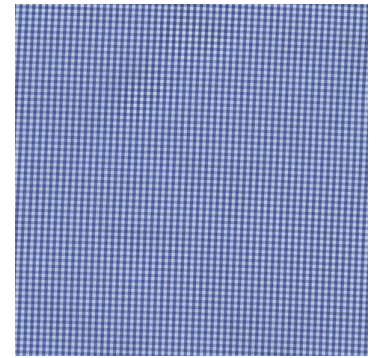
28.FLL8808N-41088



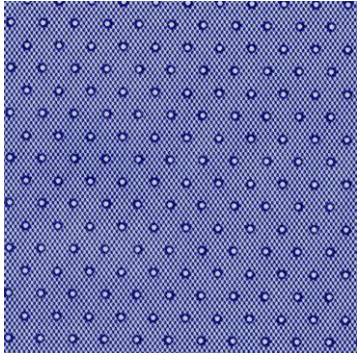
16.FLL150



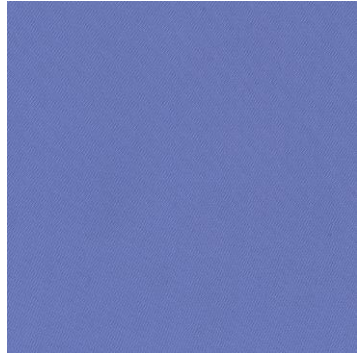
141.FLLYK1780-110



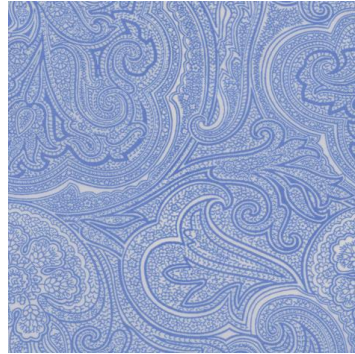
3.FLL7142-5



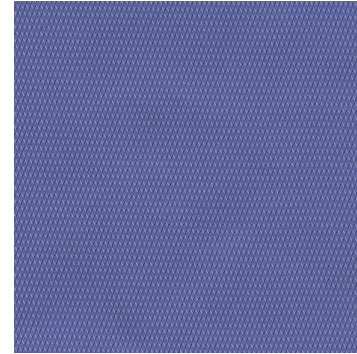
287.FLLDL097



250.FLLYK1650-4032



196.FLLDL014



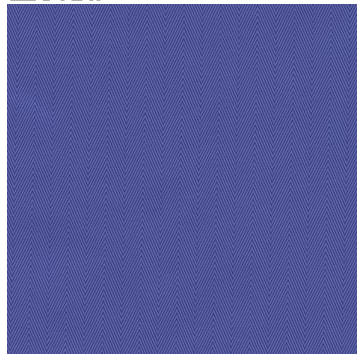
62.FLL624-131



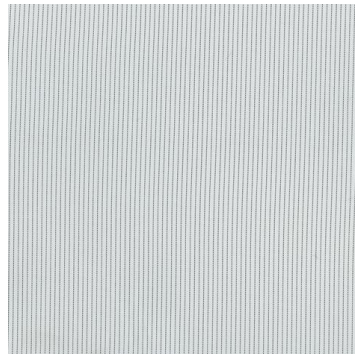
218.FLLDL046



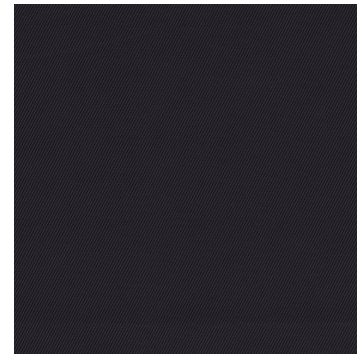
256.FLLDL071



66.FLL624-135



127.FLL621-040



58.FLL623-NM706



288.FLLDL098



289.FLLDL099



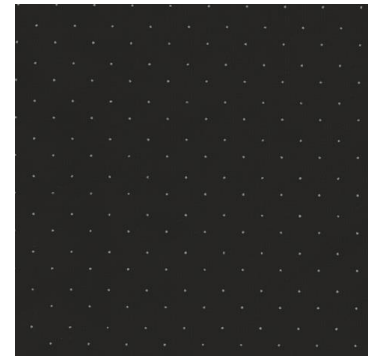
146.FLLYK1780-198



109.FLL624-017



48.FLL622-BK



182.FLL9727-BK



290.FLL9727-119



44.FLL8808N-811



231.FLLDL019



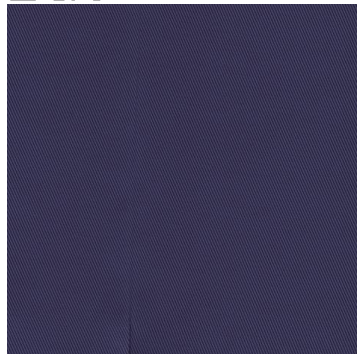
148.FLLYK1780-200



103.FLL624-049



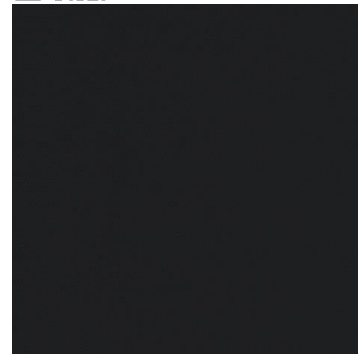
291.FLLBB003



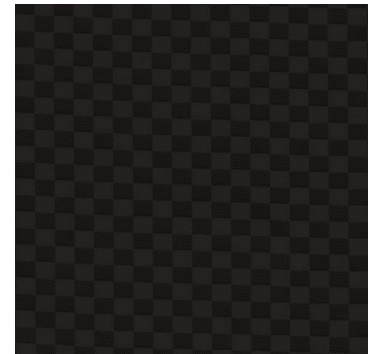
56.FLL623-113



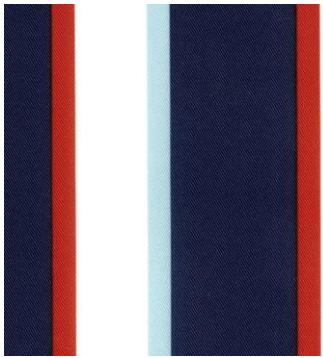
220.FLLDL048



157.FLLYK1790-47



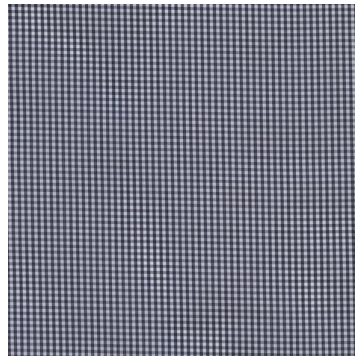
76.FLL624-041



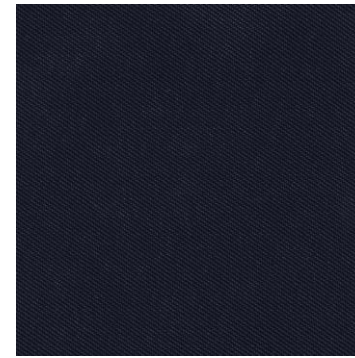
292.FLLDL101



25.FLL621-587



4.FLL7142-1



243.FLL219



293.FLLJQ228-WBK



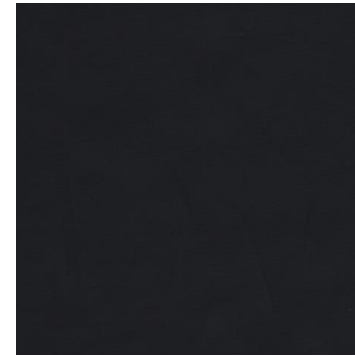
294.FLLDL102



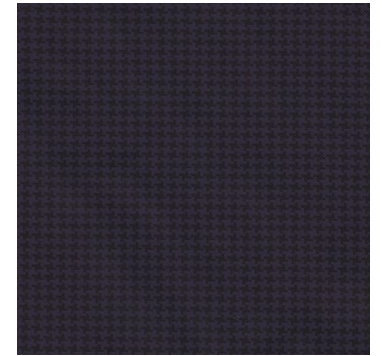
246.FLLYK1780-255



255.FLLDL067



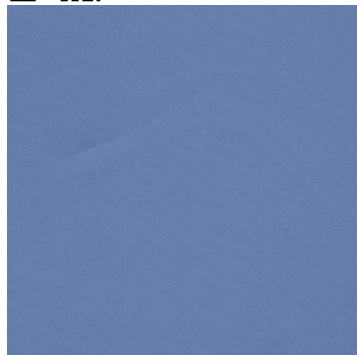
47.FLL622-071



20.FLL3002-9



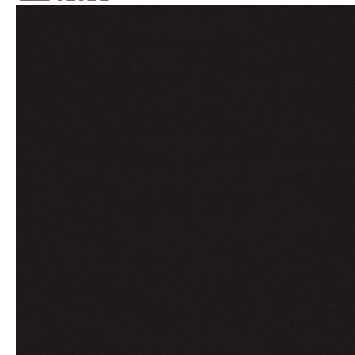
295.FLLDL103



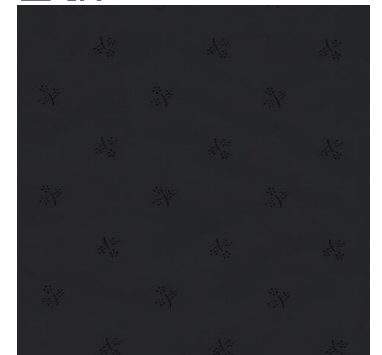
245.FLLYK1780-168



212.FLLDL028



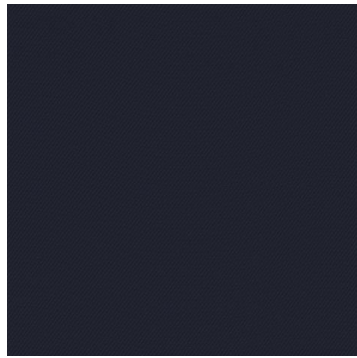
147.FLLYK1780-197



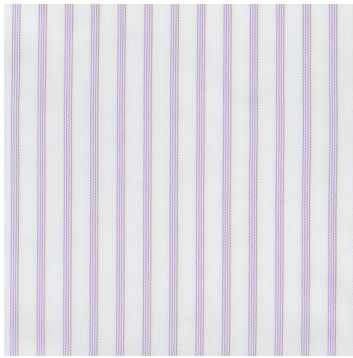
102.FLL624-050



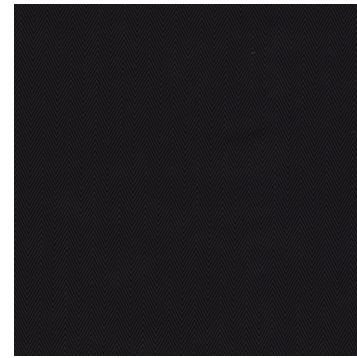
296.FLLDL105



149.FLLYK1790-45



130.FLL621-23



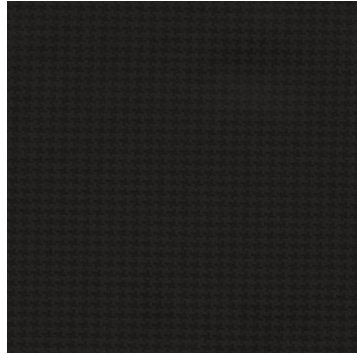
70.FLL624-044



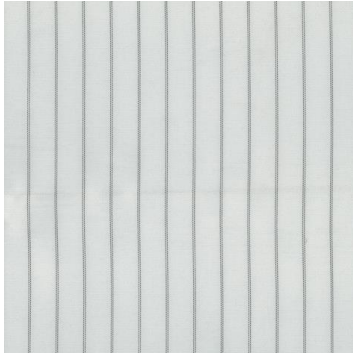
202.FLLDL025



297.FLLDL106



21.FLL3002-10



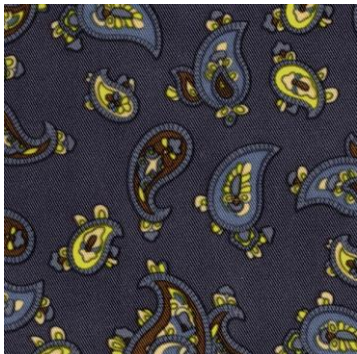
128.FLL603-E



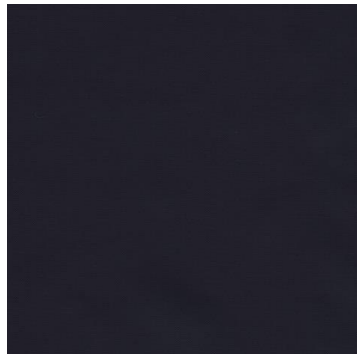
59.FLL623-29



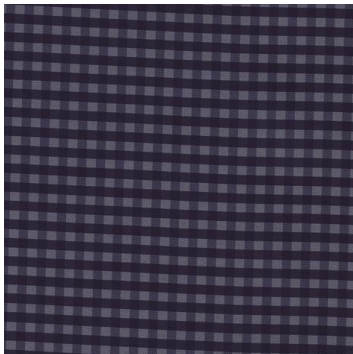
262.FLLDL078



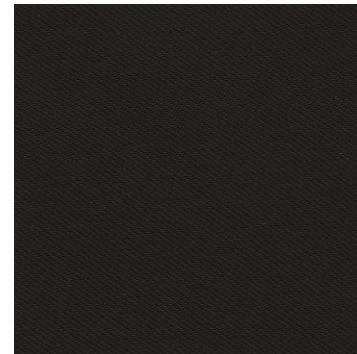
298.FLLDL107



45.FLL622-072



12.FLL186



254.FLLYK1650-99



110.FLL624-020



299.FLLDYH001



300.FLLDYH002



301.FLLDYH005



302.FLLDYH006



303.FLLDIY...

NOTE:

Linings for No.127-134 are yarn-dyed linings, only used for sleeve lining.

Linings for No.241-243 are thermal storage&insulation linings, only used for fall and winter suits.

All linings in this book couldn't be used for pant lining.

Linings for No.299-302 are positioning printing linings, should be used with special codes.

Lining No.303 will be the custom made lining(meaning we can make lining according to your picture), should be used with special codes, please contact the customer service for detailed information.

There will be colour difference for every bulk linings, so samples in this book are only for the reference, please refer to the actual lining.